

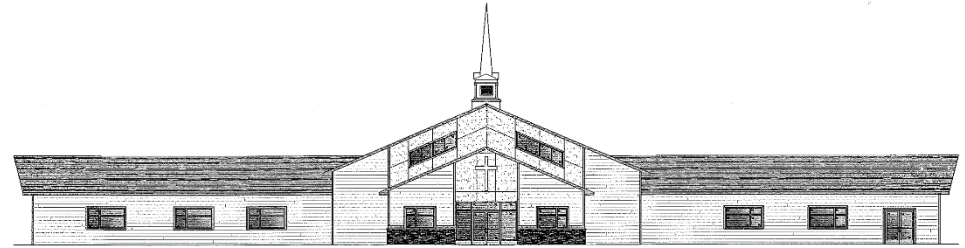
NONPROFIT ORG.  
U.S. POSTAGE  
PAID  
PERMIT NO. 1  
Clear Lake, WI 54005

First Lutheran Church  
811 South Avenue W.  
PO Box 116  
Clear Lake, WI 54005

Address Service Requested

# First Edition

*“Growing God’s Family by Serving”*



First Evangelical Lutheran Church ~ LCMC  
Clear Lake, Wisconsin

Office Hours 8:00 a.m.-3:00 p.m.; Monday-Friday  
Phone: 263-2846

Pastor’s Office Hours 9:00 a.m.-12:00 p.m.; Monday-Thursday  
Parsonage: 263-2848

Email: [firstluth@cltcomm.net](mailto:firstluth@cltcomm.net) Website: [www.firstluthclearlake.com](http://www.firstluthclearlake.com)



**June 2020**

## Returning to Public Worship

Your Council met on May 19<sup>th</sup> to discuss a return to public worship. They decided the earliest Sunday we will return is June 21<sup>st</sup>. A final decision will be made at the June 16<sup>th</sup> Council meeting. Please pay attention to public announcements after that time via Facebook and the church answering machine.

The Council considered the recommendations published by the Center for Disease Control as well as the Wisconsin Council of Churches. We were also in some contact with the Polk County Department of Health. In addition, the Council wanted our return to public worship to happen in the new sanctuary. We anticipate our certificate of occupancy to come some time in mid-June.

It may be helpful to think of a return to public worship like the turning of a radio dial. One has to work the dial back and forth until the signal is strong. Our return will not be like a light switch. We will not be able to flood back into worship as before without any precautions.

So what will our public worship look like? It will be very similar to what we have been experiencing already online. You can expect it to include the scripture, sermon, prayers and communion but in a simplified format with little or no singing for a while. We will offer two Sunday services at our familiar 8:30 AM and 10:00 AM times. We may have a Midweek Wednesday service at 7:00 PM as well.

If you have any cold or flu-like symptoms, you should stay home out of love for your neighbor. We encourage masks for those who are in more vulnerable situations. Ushers will be wearing masks. The seating will be socially distanced and we will have to avoid close physical contact such as a greeting line or passing of offering plates. We will not be able to have fellowship at first either. This is all done out of an abundance of caution and love for our neighbors, friends and family.

Those who don't feel safe or comfortable with public worship should know we will continue with our online and drive-up worship options.

This of course will all pass into more regular worship patterns as the Pandemic gets under control. For now we will be extra cautious.

In Christ,  
Pastor Bryan

## Sanctuary Addition

Many of you have shared your appreciation for our progress videos posted on Facebook during the quarantine. Most know then that the new sanctuary is

almost complete. There are a few more items to be wired and our painter will be making final touch-ups. Two big areas to be completed include the outside landscaping with blacktop put down, up to the emergency exits, as well as the re-installation of the sound and projection system. We are grateful that most of the equipment donated in memory of Bonnie Benson can continue to be used in the new sanctuary. The beautiful stained glass windows will likely be put in after we begin worshipping in the new sanctuary as the original designer needs to make some minor adjustments. We've been patient thus far so a little more time won't hurt in that regard.

Our builder believes the work should be completed along with the state inspection in time for us to enter the sanctuary for the first time on Sunday, June 21<sup>st</sup>. The Council will make the final determination at their June meeting so watch for announcements. We appreciate Patti Wyss for supervising the progress as well as the hard work of the Building Committee. And we thank you, the congregation, for your generous financial support. The mortgage burden will be about \$5,000

per month. We will surely make that if we pitch in together. Now let's fill the building as we make disciples for Christ. Thanks be to God!



Dear First Lutheran Membership,

As your Council, we take our responsibility to the members of First Lutheran very seriously. We continue to pray for you all and are here to serve you in whatever way we are able.

When it comes to finances, we understand that making sound decisions with your contributions to the church is important. We recognize many of you may be facing financial difficulties during the Stay-at-Home order. The council has been trying to put plans in place, so we are able to move forward from the potential economic strain that has been put on our members.

With a potentially unpredictable future, we want to make you aware of an emergency action that the council took in order to help us prepare. The Federal government offered the Paycheck Protection Program (PPP) to businesses and non-profits to assist with payroll and limited other expenses. We applied for and were granted a 2-year loan with a 1% interest rate, with the option of debt forgiveness, as long as we meet specific criteria. We expect to meet those criteria and have forgiveness of the debt. With the loan money we received, along with what is currently in our accounts, we are solvent for ten months on our mortgage and three months on our general fund, assuming we make our budgeted payments.

Ideally, we would not want to utilize any of the funds we have been given through the Paycheck Protection Program, and we will do so only as a last resort. Thus far, contributions from our membership have been enough to maintain our financial obligations. While we hope that trend continues, we also need to be realistic that might not be possible for everyone, and we have this loan as a backup.

If you have specific questions about anything related to this loan or church finances, please feel free to contact either of our finance committee members (Dale Wirth or Liane Petersen). If you would like more information about the Paycheck Protection Program, there is information on the US Small Business Administration web site <https://www.sba.gov/funding-programs/loans/coronavirus-relief-options/paycheck-protection-program>.

Yours in Christ and here to serve you,

The First Lutheran Church Council



## Giving Options

Your church continues its operations and the mortgage cannot be ignored. Consider how you may contribute, especially if you are financially stable at this time. At the present time, giving has been enough to service our debt load and we pray that will continue. Thank you for your generosity. We have four giving options:

1. Mail or bring your offering envelope to church. That may be the simplest solution for many of us.
2. Use the online link to donate electronically via our website at [www.firstluthclearlake.com](http://www.firstluthclearlake.com).
3. Sunday worship bulletins now have a QR code that can be read by Smartphones to give electronically as well.
4. You can always call the office to set-up electronic giving or receive information on how to download a Smartphone giving App.

## **FINANCES**

### General Fund Update

Offering Total as of May 17<sup>th</sup> (\$15,090 needed monthly) \$10,936.00

### Mortgage Fund Update

Offering Total as of May 17<sup>th</sup> (\$5,000 needed monthly) \$3,885.00  
Bremer Mortgage Remaining Balance \$833,640.45

## Share Your Love

Please remember the following care facility or homebound members in your cards and calls. Remember, all care facilities and most senior housing is currently on lock down to all visitors including family.

- **Louise Ball** (Ridgeview Apartments)  
390 5<sup>th</sup> Street NW, Apt. 104  
Clear Lake, WI 54005 • 715-263-3743
- **Kathy Fox** (Amery Memory Care)  
215 Birch Street W.  
Amery, WI 54001 • 715-268-4800
- **Gloria Hedquist** (Golden Age Manor )  
220 Scholl Street, Room 111  
Amery, WI 54001 • 715-268-2684
- **Bob Larson** (Park View Home)  
220 Lockwood Street #306  
PO Box 265  
Woodville, WI 54028 • 715-698-2451
- **Wayne Logan** (Park View Home)  
220 Lockwood Street #108  
PO Box 265  
Woodville, WI 54028 • 715-698-2451
- **Myrna Paulson** (Evergreen Apartments)  
611 Harriman Avenue S. Apt. 203  
Amery, WI 54001 • 715-268-7732
- **Beverly Schake** (Willow Ridge)  
400 Deronda Street, Room 215  
Amery, WI 54001 • 715-268-8171
- **Ray Smith** (Guardian Angels-Riverview Landing)  
9200 Quantrelle Avenue NE, Apt. 470  
Otsego, MN 55330 • 763-441-9848

## JUNE BIRTHDAYS



- 3: Jared Levendoski  
Carrie Buhr  
Mary Benware
- 4: Walker Jarchow  
Dan Cain
- 5: Harold Tronrud
- 6: Jill Buhr  
Lilly Hanacek
- 7: Robert Campion  
Amy Strobach  
Carl Alvermann
- 8: Addison Christensen
- 10: Tylor Cain  
Russell Sloan  
Ryan Kerns  
Jack Petersen
- 11: Jonathan Somsen
- 13: Jeanne Briesemeister  
Michael Johnson  
Patrick Haley
- 14: Gary Twining
- 16: Melvin Ramsey
- 17: Kimberly Murray
- 18: Hazel Cain  
Patrick Hennessy  
Kristin LaBeree
- 19: Aubree Schramski  
Joshua Kaczmariski  
Andy Dimler
- 21: Dale Wirth
- 22: Piper Bylander  
Bristle Ninke
- 24: Xander Simon
- 27: Richard Lambert, Sr.
- 28: Sherry Buhr  
Mark Gilbertson  
Charles Buhr
- 29: Kelly Kobernick  
Nicole Fritz  
Seth Cain



### Clear Lake Community VBS

We are tentatively planning to hold VBS in August.  
First Lutheran is the host church this summer.

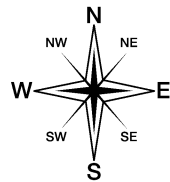
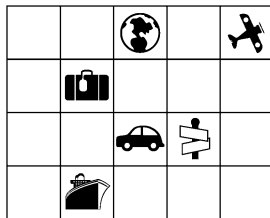
We'll keep you posted!



# Wherever we go

No matter where we journey, God always protects us.

*Directions: Use the map and compass to answer the clues. Then write the boxed letters in order in the spaces below to complete Psalm 121:8, NIV.*



**Start at the SHIP.**

Move 1 space N, 3 spaces E, and 2 spaces N     \_ \_ \_

**Start at the WORLD.**

Move 1 space W, 1 space S, and 1 space SE     \_ \_

**Start at the SUITCASE.**

Move 1 space NE, 2 spaces S, and 1 space E     \_ \_ \_

**Start at the PLANE.**

Move 2 spaces SW, 1 space S, and 1 space W     \_ \_

**Start at the CAR.**

Move 1 space E, 1 space N, and 1 space NW     \_ \_ \_

**Start at the SIGN.**

Move 1 space SE, 1 space W, and 2 spaces NW     \_ \_ \_ \_

The \_ ORD will watch ove\_ your comi\_g and go\_ng  
both no\_ and for\_ vermore. Psalm 121:8, NIV

Answer: plane, car, sign, ship, world, suitcase. The LORD will watch over your coming and going both now and forevermore. Psalm 121:8, NIV

## NEWS & NOTES



Jack & Dar Jungmann, Gloria Hedquist Wayne Logan, and Denny Benson's brother-in-law, Gary Lensenlink. Please continue to remember these members and friends in your thoughts and prayers.

*If you want to be included on the public prayer list, please notify the church office.*

**Please keep in your prayers Alex Colbeth**, currently serving in Afghanistan. You are invited to send him greetings and well wishes at:  
SPC. Colbeth, Alexander  
486 EVCC/829 EVCC  
Dahlke. APO, AE 09322

**SYMPATHY:** Our sympathy is extended Jody Hadac on the death of her father, David Brownlie.

### Lawn Mowing

We have always had a good group taking turns mowing the church lawn during the Summer. Would you be willing to help again? If so, call the office 715-263-2846, so we can get you down on a schedule. Thank you in advance for your assistance!

### Seeking Your Contact Information



Please notify the office of your current email and smartphone contact. This will be very important for timely announcements for emergency situations.